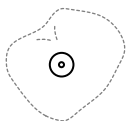


16
(0.6')

adjustable
up to 3000
(10')
standard

adjustable
up to 30500
(100')
custom

±260 - 400
(10.5" - 15.7")



38 (1.5")

- PENDANTS: one
- MOUNTING: mini outie canopy 38mm (1.5") in diameter x 16mm (0.6") deep
- LAMPING: 1.5w LED or 10w xenon
- COAX: adjustable. 3000mm (10') standard / up to 30500mm (100') maximum
- MATERIALS: blown glass, braided metal coaxial cable, electrical components, white polyurethane canopy
- WEIGHT: approx. 2.7kg (6lb)
- POWER: remote mounted (fixture does not hook directly to a junction box). Power supplies included

DESCRIPTION

The 'mo' designation in this 73 variant refers to the mini outie canopy. The mini outie canopy is 38mm (1.5") in diameter and 16mm (0.6") deep, which creates a subtle profile that will essentially disappear into the application surface. The pendant drop lengths on this light fixture are adjustable up to the specified maximum.

The 73 is formed by blowing liquid glass into a folded and highly heat-resistant ceramic fabric vessel. The resulting shape has a formal and textural expression intuitively associated with fabric, which becomes permanent and rigid as it cools. Each 73 is completely unique in proportion, size and shape.

NOTES

- + Purchase replacement lamps online at www.bocci.com/shop/bulbs
- + Unless otherwise noted when ordering, all fixtures will be outfitted to be xenon compatible
- + Requires power supplies to be remote mounted

US Patent # D762,323 S
EU Patent # 002633230-0001 - 0003

Made in Vancouver, Canada

Vancouver
sales@bocci.com
www.bocci.com

Berlin
europe@bocci.com
www.bocci.com

approx. 2.7kg (6lb)



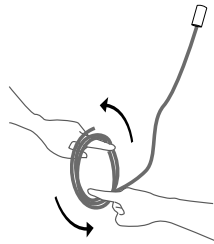
MINI OUTIE CANOPY

73.1mo

Design by Omer Arbel
PRODUCT SPECIFICATION

© 2020, Bocci Design and Manufacturing Inc. All rights reserved. Any inquiries should be directed to: info@bocci.com

BOCCI



1

Very carefully uncoil the braided coaxial cable in a spool like manner. Insert your index fingers into opposite sides of the roll then rotate your fingers around each other to unroll the coaxial cable.

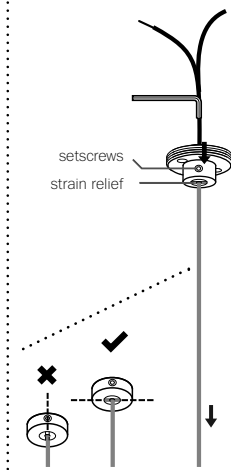
Use patience: allow the cable to uncoil completely to avoid kinks.



2

Drill a 9mm (0.35") diameter hole in ceiling material. Pull low voltage house wire through the hole.

Note: This low voltage wire will run to a remote mounted power supply.



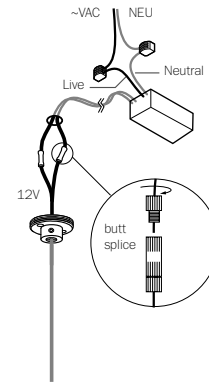
3

Determine the overall drop for the pendant fixture. Use the 2mm Allen key to loosen the setscrew in the canopy and gently feed the cable through the canopy until you have reached your desired drop length. Use Allen key to tighten the setscrew to hold the strain relief and secure the coaxial cable at its new length.

DO NOT OVERTIGHTEN.

Note: The strain relief is a black plastic collar around the coaxial cable. There is a single slot opening on the side of the strain relief component. It is essential that this opening is oriented at 90 degrees to set screw chamber. There can be no contact between the set screw and the cable.

RISK OF ELECTRIC SHORT!



4

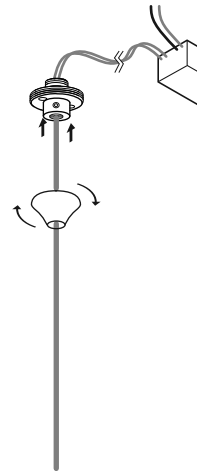
Xenon (110V) or LED: connect the black wire to black and white wire to white wire.

Xenon (230V): connect black wire to brown wire and white wire to blue wire.

Connect the house wires to the coaxial cable using #16 butt splices (stagger the splices). Use raw butt splices and heat shrink to simplify the installation.

For multiple pendant installations, ensure that the braided outer wires are all connected to one 12V output wire and all inner insulated wires are connected to the other or a short will occur.

Note: Insulated core is positive and braided exterior is negative.

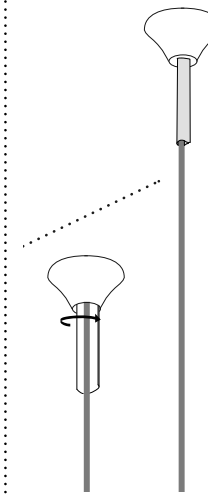


5

The client is responsible to ensure fasteners are attached to a robust structural substrate.

Affix mini-canopy to ceiling surface with fasteners provided. Twist the threaded outie cover into place.

Turn power to fixture on.



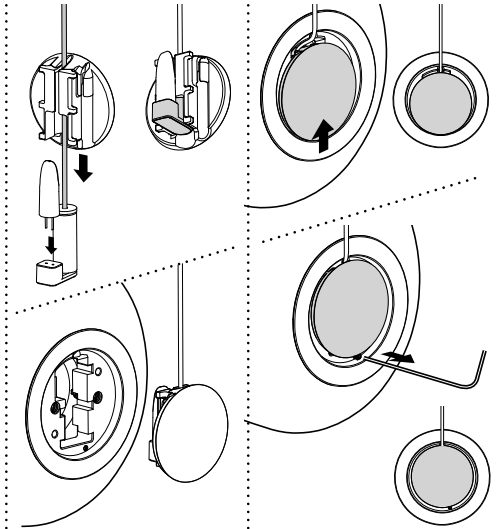
6

Use silicone caulk to fill the seam between the ceiling and the canopy.

Note: mask the coaxial cable off with painters tape to help with cleanup.

Paint over entire assembly.

Remove masking tape and clean fingerprints from glass surfaces.



7

Plug the lamp into lamp socket. Check that each lamp is working properly as you go along.

Slide the slotted cap through the cable and push down to lock it in position.

Attach the pendant to the cap through the slotted grooves.

8

Slide the cap so the two circles are concentric. Partially unthread the exposed screw to lock the cap in position. DO NOT unthread the screw all the way.

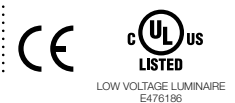
For additional assistance, please contact Bocci:

Vancouver
sales@bocci.com
www.bocci.com

Berlin
europe@bocci.com
www.bocci.com

US Patent # D762.323 S
EU Patent # 002633230-0001
- 0003

Made in Vancouver, Canada



MINI OUTIE CANOPY

73.1mo

Design by Omer Arbel
PRODUCT INSTALLATION INSTRUCTIONS

© 2020, Bocci Design and Manufacturing Inc. All rights reserved. Any inquiries should be directed to: info@bocci.com

BOCCI