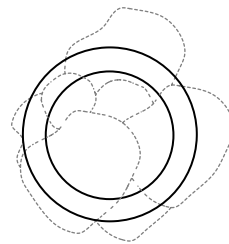


±260 - 400  
(10.5' - 15.7')



378 (15')

508 (20')

53  
(2')

up to 3000  
(10')  
standard

up to 30500  
(100')  
custom

approx. 33kg (73lb)

PENDANTS: eight

MOUNTING: white powder coated round canopy 508mm (20') in diameter x 53mm (2') deep

LAMPING: 1.5w LED or 10w xenon

COAX: fixed lengths. 3000mm (10') standard / up to 30500mm (100') maximum

MATERIALS: blown glass, braided metal coaxial cable, electrical components, white powder coated canopy

WEIGHT: approx. 33kg (73lb)

POWER SUPPLIES: integral

#### DESCRIPTION

73.8 is a random configuration of eight 73 pendants hung from a round canopy. The drop lengths of the pendants are randomized between a client specified range of heights to variously cluster and scatter. The result is an ambient installation or field of light.

The 73 is formed by blowing liquid glass into a folded and highly heat-resistant ceramic fabric vessel. The resulting shape has a formal and textural expression intuitively associated with fabric, which becomes permanent and rigid as it cools. Each 73 is completely unique in proportion, size and shape.

#### NOTES

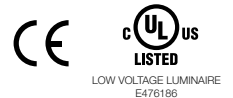
- + Purchase replacement lamps online at [www.bocci.com/shop/bulbs](http://www.bocci.com/shop/bulbs)
- + Unless otherwise noted when ordering, all fixtures will be outfitted to be xenon compatible
- + As an alternative to the junction box power supply, Bocci recommends mounting power supplies remotely in an easily accessible and hidden location for ease of long-term maintenance.

US Patent # D762,323 S  
EU Patent # 002633230-0001 - 0003

Made in Vancouver, Canada

Vancouver  
[sales@bocci.com](mailto:sales@bocci.com)  
[www.bocci.com](http://www.bocci.com)

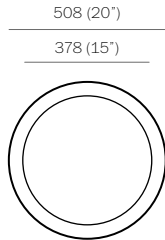
Berlin  
[europe@bocci.com](mailto:europe@bocci.com)  
[www.bocci.com](http://www.bocci.com)



ROUND

# 73.8

Design by Omer Arbel  
PRODUCT SPECIFICATION

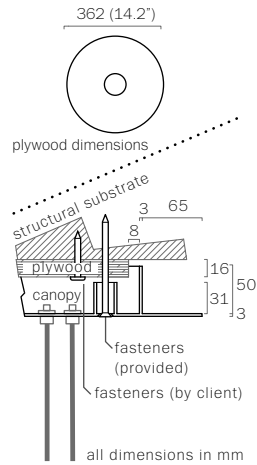


1

Note: All connections and power supplies are tested by our technicians before shipping. However, it is possible for ports/ power supplies to come loose or damage during shipping.

Test each port before installing canopy to ceiling to catch any loose connections or faulty power supplies.

Measure and mark the light fixture canopy position on the ceiling



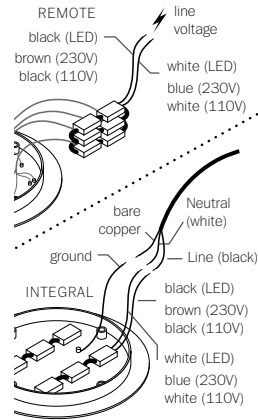
2

Note: The client is responsible for providing a robust 16mm (5/8") plywood backing or wood blocking to securely anchor to the structural substrate.

Connections from the plywood to the structural substrate are the client's responsibility.

Measure the plywood so that it fits within the canopy side walls (refer to detail above).

Anchor the plywood backing to the structural ceiling substrate.



3

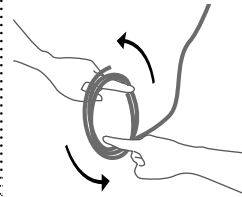
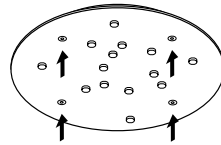
Connect power supplies to line voltage.

Xenon (110V) or LED: connect the black wire to black and white wire to white wire.

Xenon (230V): connect black wire to brown wire and white wire to blue wire.

For the ground connection, connect the green wire with yellow stripe to the bare copper wire or green wire in the junction box.

Note: Bocci strongly recommends mounting power supplies remotely in a close, accessible and hidden location for ease of long term maintenance. Installation to be done by certified personnel to ensure compliance with the code.



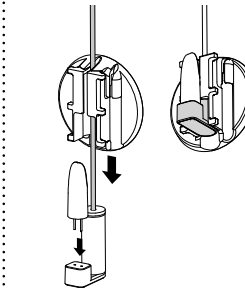
4

Anchor canopy into the plywood backing using the fasteners provided.

Turn power to fixture on.

Very carefully uncoil the braided coaxial cable in a spool like manner. Insert your index fingers into opposite sides of the roll then rotate your fingers around each other to unroll the coaxial cable.

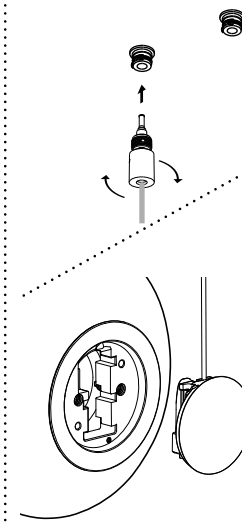
Use patience: allow the cable to uncoil completely to avoid kinks.



5

Plug the lamp into lamp socket.

Slide the slotted cap through the cable and push down to lock it in position.

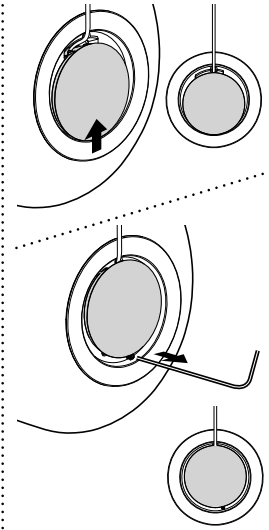


6

Each pendant terminates in a "headphone jack" type connector, which plugs into a receiving receptacle in the canopy. Clients are encouraged to compose their own pendant configuration on site, thus creating a truly unique fixture. After plugging in each pendant, turn the threaded sheath into place by hand ensuring that it is adequately tightened. Tools are not required.

Check that each lamp is working properly as you go along by keeping power to the fixture on and lamps plugged in.

Attach the pendant to the cap through the slotted grooves.



7

Slide the cap so the two circles are concentric. Partially unthread the exposed screw to lock the cap in position. DO NOT unthread the screw all the way.

For additional assistance, please contact Bocci:

Vancouver  
sales@bocci.com  
www.bocci.com

Berlin  
europe@bocci.com  
www.bocci.com

US Patent # D762,323 S  
EU Patent # 002633230-0001 - 0003

Made in Vancouver, Canada



ROUND

73.8

Design by Omer Arbel  
PRODUCT INSTALLATION INSTRUCTIONS

© 2020, Bocci Design and Manufacturing Inc. All rights reserved. Any inquiries should be directed to: info@bocci.com

**BOCCI**