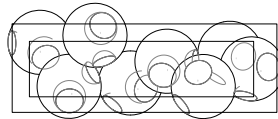


±190-210  
(7.5"-8.5")



720 (28.3')

850 (33.5')

PENDANTS: eight

MOUNTING: white powder coated rectangular canopy 850mm (33.5") x 284mm (11.2") x 53mm (2") deep

LAMPING: 1.5w LED or 10w xenon

COAX: fixed lengths. 3000mm (10') standard / up to 30500mm (100') maximum

MATERIALS: blown glass, braided metal coaxial cable, electrical components, white powder coated canopy

WEIGHT: approximately 27kg (60lb)

POWER SUPPLIES: integral

## DESCRIPTION

38.8V is a random configuration of eight 38V pendants hung from a rectangular canopy. The pendants are designed to hang in a random configuration, the result is an ambient installation or field of light.

38V is a variant of the original 38 series where a large glass sphere is blown with a multitude of haphazard interior cavities, which intersect and collide in unpredictable ways. 38V is smaller, lighter and suspended with coaxial cables. The interior cavities can be filled with plants or left empty..

Standard 38V are made with clear glass exterior spheres and milk white interior lamp holder cavities.

## NOTES

- + Purchase replacement lamps online at [www.bocci.ca/shop/bulbs](http://www.bocci.ca/shop/bulbs)
- + Unless otherwise noted when ordering, all fixtures will be outfitted to be xenon compatible
- + As an alternative to the junction box power supply, Bocci recommends mounting power supplies remotely in an easily accessible and hidden location for ease of long-term maintenance.

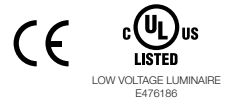
EU Patent # 002071019-001

Made in Vancouver, Canada

Vancouver  
sales@bocci.ca  
www.bocci.ca

Berlin  
europe@bocci.ca  
www.bocci.ca

approx 27kg (60lb)



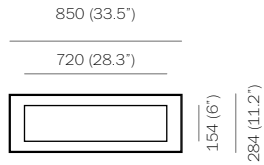
RECTANGLE

# 38.8V

Design by Omer Arbel  
PRODUCT SPECIFICATION

© 2019, Bocci Design and Manufacturing Inc. All rights reserved. Any inquiries should be directed to: [info@bocci.ca](mailto:info@bocci.ca)

# BOCCI

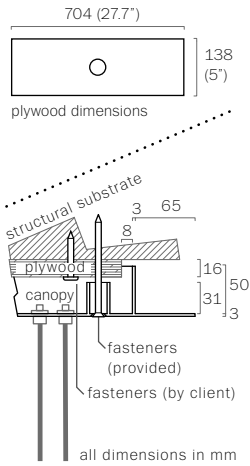


# 1

Note: All connections and power supplies are tested by our technicians before shipping. However, it is possible for ports/ power supplies to come loose or damage during shipping.

Test each port before installing canopy to ceiling to catch any loose connections or faulty power supplies.

Measure and mark the light fixture canopy position on the ceiling



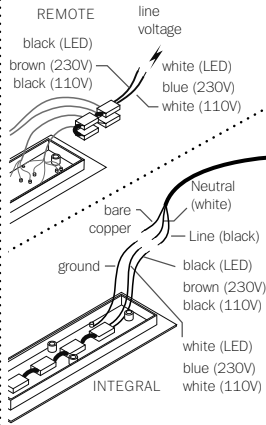
# 2

Note: The client is responsible for providing a robust 16mm (5/8") plywood backing or wood blocking to securely anchor to the structural substrate.

Connections from the plywood to the structural substrate are the client's responsibility.

Measure the plywood so that it fits within the canopy side walls (refer to detail above).

Anchor the plywood backing to the structural ceiling substrate.



# 3

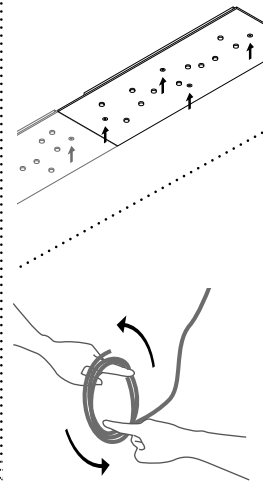
Connect power supplies to line voltage.

Xenon (110V) or LED: connect the black wire to black and white wire to white wire.

Xenon (230V): connect black wire to brown wire and white wire to blue wire.

For the ground connection, connect the green wire with yellow stripe to the bare copper wire or green wire in the junction box.

Note: Bocci strongly recommends mounting power supplies remotely in a close, accessible and hidden location for ease of long term maintenance. Installation to be done by certified personnel to ensure compliance with the code.



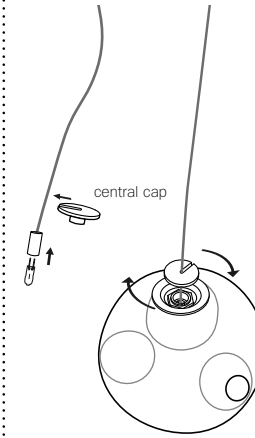
# 4

Anchor canopy into the plywood backing using the fasteners provided.

Turn power to fixture on.

Very carefully uncoil the braided coaxial cable in a spool like manner. Insert your index fingers into opposite sides of the roll then rotate your fingers around each other to unroll the coaxial cable.

Use patience: allow the cable to uncoil completely to avoid kinks.



# 5

Bocci lamps are included. Carefully plug the lamp into the socket. Ensure power to lamp is working correctly.

Remove the center cap from 38V pendant. Install 38V pendant by sliding the center cap onto the coaxial cable, gently insert the lamp into the pendant, then tighten the center cap connection by hand.

DO NOT OVERTIGHTEN.

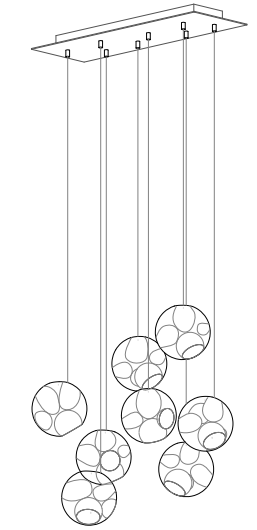
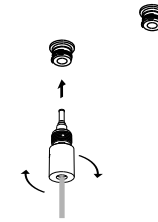
Remove the protective film from the center cap after assembly.

Note: when using a dimmer use only low voltage electronic dimmer.

# 6

Each pendant terminates in a "headphone jack" type connector, which plugs into a receiving receptacle in the canopy. Clients are encouraged to compose their own pendant configuration on site, thus creating a truly unique fixture. After plugging in each pendant, turn the threaded sheath into place by hand ensuring that it is adequately tightened. Tools are not required.

Check that each lamp is working properly as you go along by keeping power to the fixture on and lamps plugged in.



# 7

Clean fingerprints from surfaces.

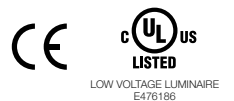
For additional assistance, please contact Bocci:

Vancouver  
sales@bocci.ca  
www.bocci.ca

Berlin  
europe@bocci.ca  
www.bocci.ca

EU Patent # 00271019-001

Made in Vancouver, Canada



RECTANGLE

# 38.8V

Design by Omer Arbel  
PRODUCT INSTALLATION INSTRUCTIONS

© 2019, Bocci Design and Manufacturing Inc. All rights reserved. Any inquiries should be directed to: info@bocci.ca

# BOCCI