

35  
(1.4')

adjustable  
up to 3000  
(10')  
standard

adjustable  
up to 30500  
(100')  
custom



Ø (1.4')

Ø88 (3.5')



±178-230  
(7'-9')

±165-203 (6.5'-8')

approx 1.7kg (4lb)

PENDANTS: one

MOUNTING: mini innie canopy (mud-in), 35mm (1.4") in diameter (exposed), 88mm (3.5") in diameter (overall) x 35mm (1.4")

LAMPING: 1.5w LED or 10w xenon

COAX: adjustable, 3000mm (10') standard / up to 30500mm (100') maximum

MATERIALS: blown glass, braided metal coaxial cable, electrical components, white polyurethane canopy

WEIGHT: approx. 1.7kg (4lb)

POWER SUPPLIES: remote mounted (fixture does not hook directly to a junction box). Power supplies included

#### DESCRIPTION

The 'mi' designation in this 73V variant refers to the mini innie canopy. The mini innie canopy is 35mm (1.4") in diameter (exposed), 88mm (3.5") in diameter overall, and 35mm (1.4") deep which is meant to be mudded into drywall. The pendant drop lengths on this light fixture are adjustable up to the specified maximum. Note: not adjustable after drywall is finished.

The 73V is formed by blowing liquid glass into a folded and highly heat-resistant ceramic fabric vessel. The resulting shape has a formal and textural expression intuitively associated with fabric, which becomes permanent and rigid as it cools. Each 73V is completely unique in proportion, size and shape.

#### NOTES

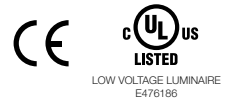
- + Purchase replacement lamps online at [www.bocci.com/shop/bulbs](http://www.bocci.com/shop/bulbs)
- + Unless otherwise noted when ordering, all fixtures will be outfitted to be xenon compatible
- + Requires power supplies to be remote mounted

EU Patent # 006365441-0001-0004

Made in Vancouver, Canada

Vancouver  
sales@bocci.com  
www.bocci.com

Berlin  
europe@bocci.com  
www.bocci.com



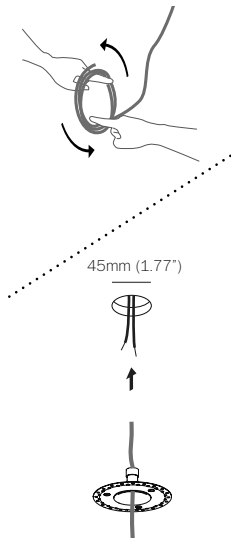
MINI INNIE CANOPY

# 73.1Vmi

Design by Omer Arbel  
PRODUCT SPECIFICATION

© 2020, Bocci Design and Manufacturing Inc. All rights reserved. Any inquiries should be directed to: [info@bocci.com](mailto:info@bocci.com)

# BOCCI



1

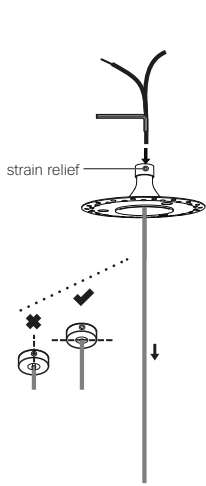
Very carefully uncoil the braided coaxial cable in a spool like manner. Insert your index fingers into opposite sides of the roll then rotate your fingers around each other to unroll the coaxial cable.

Use patience: allow the cable to uncoil completely to avoid kinks.

Thread the coaxial cable through the canopy.

Drill a 45mm (1.7") diameter hole in ceiling material. Pull low voltage house wire through the hole.

Note: This low voltage wire will run to a remote mounted power supply.



2

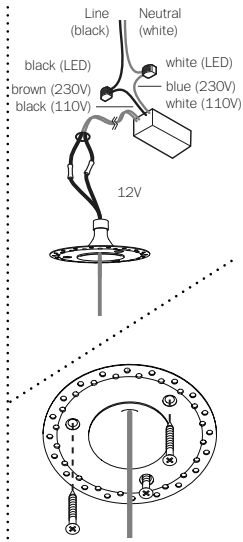
Determine the overall drop for the pendant from the lamp fixture. Use the 2mm Allen key to loosen the setscrew in the canopy and gently feed the cable through until you have reached your desired drop length.

Use Allen key to tighten the setscrew to hold the strain relief and secure the coaxial cable at its new length. Perform a gentle tug test to ensure it is secure.

DO NOT OVERTIGHTEN.

Note: The strain relief is a black plastic collar around the coaxial cable. There is a single slot opening on the side of the strain relief component. It is essential that this opening is oriented at 90 degrees to set screw chamber. There can be no contact between the set screw and the cable.

RISK OF ELECTRIC SHORT!



3

Xenon (110V) or LED: connect the black wire to black and white wire to white wire.

Xenon (230V): connect black wire to brown wire and white wire to blue wire.

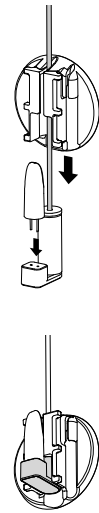
Connect the house wires to the coaxial cable using #16 butt splices (stagger the splices). Use raw butt splices and heat shrink to simplify the installation.

For multiple pendant installations, ensure that the braided outer wires are all connected to one 12V output wire and all inner insulated wires are connected to the other or a short will occur.

Note: Insulated core is positive and braided exterior is negative.

Affix mini innie canopy to ceiling surface with fasteners provided.

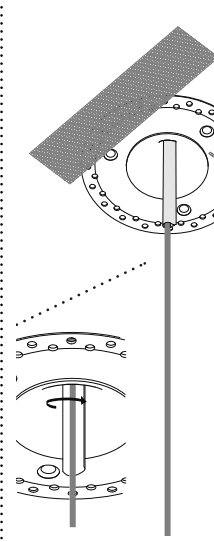
Turn power to fixture on.



4

Plug the lamp into lamp socket. Check that each lamp is working properly as you go along.

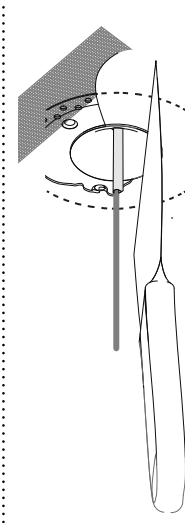
Slide the slotted cap through the cable and push down to lock it in position.



5

Tape the mounting plate edges with fiber mesh drywall tape.

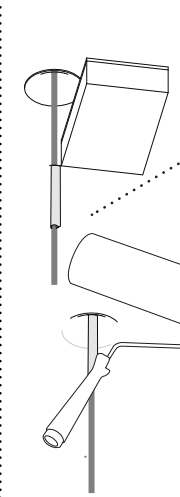
Note: mask the coaxial cable off with painters tape to help with cleanup.



6

Use a drywall filler compound to "mud over" the assembly. Use the raised edge to mud up to establish a sharp edge and to avoid getting mud in the indentation.

Feather from the center of the mounting plate outwards using a large drywall trowel.



7

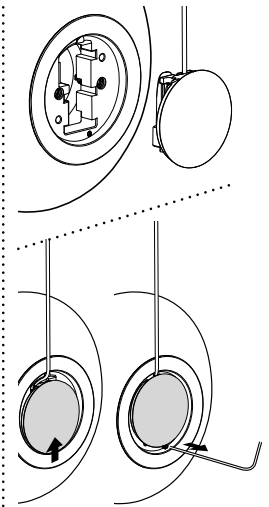
Using a foam sanding block, sand entire area until the rim and the edge of the operative component are exposed. For long term performance, it is essential that mud is sanded right down to the plastic rim.

Paint over entire assembly.

Remove masking tape and clean fingerprints from glass surfaces.

US Patent # D762,323 S  
EU Patent #  
002633230-0001 -  
0003

Made in Vancouver,  
Canada



8

Attach the pendant to the cap through the slotted grooves.

Slide the cap so the two circles are concentric. Partially unthread the exposed screw to lock the cap in position. DO NOT unthread the screw all the way.

Vancouver  
sales@bocci.com  
www.bocci.com

For additional assistance,  
please contact Bocci:  
Berlin  
europe@bocci.com  
Vancouver  
sales@bocci.com  
www.bocci.com

Berlin  
europe@bocci.com  
www.bocci.com



MINI INNIE CANOPY

73.1Vmi

Design by Omer Arbel  
PRODUCT INSTALLATION INSTRUCTIONS

© 2020, Bocci Design and Manufacturing Inc. All rights reserved. Any inquiries should be directed to: info@bocci.com

**BOCCI**